



2024-2025 Placement Auditions

Dear orchestra student,

Thank you for your interest in auditioning for the **Lassiter High School Orchestra!** Placement auditions are required only for Philharmonia (level 2), Sinfonia (level 3) and Symphony (level 4). You will prepare required two scales and an etude. *No audition is required for Concert Orchestra (level 1).*

Please read and carefully follow the directions below...

1. Record your audition video

- * You should submit **ONE** video of the two scales and required etudes/excerpts.
- * You may edit your video to put the scales and etudes/excerpts together. Partial clips/cuts of scales, etudes, of excerpts should not be spliced together.

Tips:

- * Be sure that the lighting is good and both the image and audio are clear.
- * Be sure that your video isn't flipped (Remember, the bow should be in the right hand!)
- * Be sure that you can clearly see your entire instrument, the full bow stroke and your left hand
- * Horizontal (landscape) is better for violin/viola and Vertical (portrait) works better for cello/bass (See the video guidelines on following page.)

2. Upload your video

- * Upload your video to the appropriate Flip group (Philharmonia, Sinfonia, or Chamber) at <https://flip.com/lhsoauditions>
- * In the video, state your first and last name, your current school, and your instrument
- * The video submission will be moderated (so others can't see your video)

3. Complete the audition information form

- * Go to <https://tinyurl.com/2k9l2dq7> or scan the QR Code (You will receive an email confirmation of your submission.)



Audition form

4. Visit the LHS Orchestra website

- * Visit us at <https://lassiterorchestra.org> or use the QR code
- * Browse our website and connect to our socials
- *

NOTE: YOU MUST SUBMIT A SEPARATE VIDEO AND AUDITION INFORMATION FORM FOR EACH ORCHESTRA YOU ARE AUDITIONING FOR.

DEADLINE FOR SUBMISSION: Friday, March 29, 2024 at 11:59 PM

Please contact me if you have questions or concerns. Results will be posted sometime in April. I look forward to seeing you next year in orchestra!

Sincerely,

Dr. Charles Laux, Orchestra Director
Charles.Laux@cobbk12.org



LHSO Website



Lassiter HS Orchestra

Getting the proper camera angles for videos

Violin & Viola players should be at an angle to the camera and the entire left hand/arm and entire right hand and bow stroke should be visible. The music stand should be out in front of you and away from the shot.



Cello players should be straight on to the camera as possible. This may require that you move the music stand to your left.



Double Bass players should also be straight on to the camera. This may require that you move the music stand to your left.

If you are using a phone, a vertical (portrait) mode video may be best for bassists.



Be sure your video isn't flipped horizontally (Bow goes in the right hand!)



Lassiter High School Orchestra Auditions 2024-2025

VIOLIN - PHILHARMONIA (LEVEL 2)

More information and link to submit at <https://lassiterorchestra.org/auditions>



SCALES & ARPEGGIOS

Students will record the following two-octave scales along with the required etudes/excerpts.

- C Major, 2 octaves, Two eighth notes **slurred** (eighth notes = 120 BPM)
- D melodic minor, 2 octaves, quarter note **detached** (quarter note = 80 BPM)

Notes:

- The provided fingerings are merely suggestions. Students taking private lessons should use those fingerings as provided by their teacher.
- Students do not have to follow the rhythms shown below for the scales. The use of a “Galamian turn” is encouraged.

C Major

Two Octaves

Two Octaves

D Melodic Minor

Two Octaves

Two Octaves



VIOLIN - PHILHARMONIA (LEVEL 2)

1. Wohlfahrt, Book 1. Etude No. 8 (Quarter Note = 60)

Nº 8. Largo.

#2 Parrish: Boreas (Start: m. 41)

Allegro, Quarter Note = 120, Time signature: 4/4, **TOP PART ONLY AT DIVISI**

41

p

sim.

42 43 44 45

46 47 48 49 50 51 52

f *p*

53 Alternate 54 55 56

57 *f* *p*

58 59 60 61 62

63 64 65 66 67 68

mp *p*



VIOLIN - SINFONIA (LEVEL 3)

More information and link to submit at <https://lassiterorchestra.org/auditions>



SCALES & ARPEGGIOS

Students will play the following three-octave scales along with the required etudes/excerpts.

- G major, 3 octaves, Two eighth notes slurred (eighth note = 120 BPM)
- A melodic minor, 3 octaves, quarter note detached (quarter note = 80 BPM)

Notes:

- The provided fingerings are merely suggestions. Students taking private lessons should use those fingerings as provided by their teacher.
- Students do not have to follow the rhythms shown below for the scales.
- The use of a “Galaman turn” is encouraged but not required.

G Major

Three Octaves

Three Octaves

A Melodic Minor

Three Octaves

Three Octaves



Lassiter High School Orchestra Auditions 2024-2025

VIOLIN - SINFONIA (LEVEL 3)

#1 Holst/Dackow: Jupiter from *The Planets* (Start: m. 218)

Andante, Quarter Note = 60, Time signature: 3/4

Musical score for Violin Sinfonia, Level 3, #1. The score is in 3/4 time and starts at measure 218. The first staff ends at measure 225, and the second staff starts at measure 226. The music is in 3/4 time and features various fingerings and dynamics like *ff*.

#2 Holst/Dackow: Jupiter from *The Planets* (Start: m. 77)

Quarter note = 120, Time signature: 2/4

Musical score for Violin Sinfonia, Level 3, #2. The score is in 2/4 time and starts at measure 77. The first staff ends at measure 85, the second at 95, the third at 103, and the fourth at 104. The music is in 2/4 time and features various dynamics like *p*, *pp*, and *cresc.*





VIOLIN - CHAMBER (LEVEL 4)

More information and link to submit at <https://lassiterorchestra.org/auditions>



SCALES & ARPEGGIOS

Students will play the following three-octave scales along with the required etudes/excerpts.

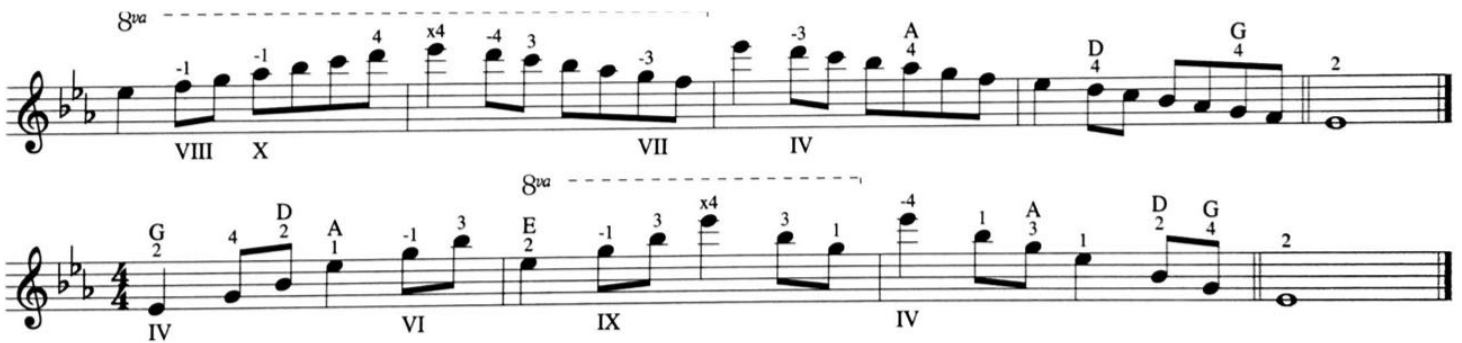
- E-flat major, 3 octaves, Two eighth notes slurred (eighth note = 120 BPM)
- B melodic minor, 3 octaves, quarter note detached (quarter note = 80 BPM)

Notes:

- The provided fingerings are merely suggestions. Students taking private lessons should use those fingerings as provided by their teacher.
- Students do not have to follow the rhythms shown below for the scales.
- The use of a “Galaman turn” is encouraged but not required.

E-flat Major

Three Octaves



B Melodic Minor

Three Octaves





VIOLIN - CHAMBER (LEVEL 4)

#1. Mazas, Etudes Spéciales, No. 26 (Quarter Note = 88)

Allegro moderato.

#2. Brahms: Tragic Overture (Half Note = 74)

Allegro, ma non troppo

p sotto voce

*Excerpt #2 has been modified to fit the needs of the audition process and does not reflect the contents of the source material